

# Instruction manual

## REMOTE INDICATOR

### RI9000



#### 1. INTRODUCTION

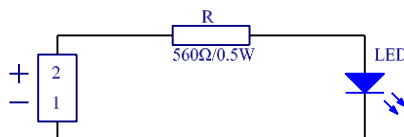
Remote indicator has been designed to duplicate the alarm signal for fire condition, given by the fire detectors.

#### 2. TECHNICAL DATA

– Power supply	9-28 V DC
– Alarm state current	40 mA/ 24V DC
– Colour of the light signalling	red
– Connection to fire detector	two-wire line
– Degree of protection	IP 40
– Operational temperature range	minus 15°C to 70°C
– Relative humidity resistance	(93 ± 3)% at 40°C
– Dimensions	(75x75x22)mm
– Weight	0.04g

#### 3. STRUCTURE

The Remote Indicator consists of a cover and a base. A circuit board with a terminal and a LED are mounted on the base.



Фиг.1

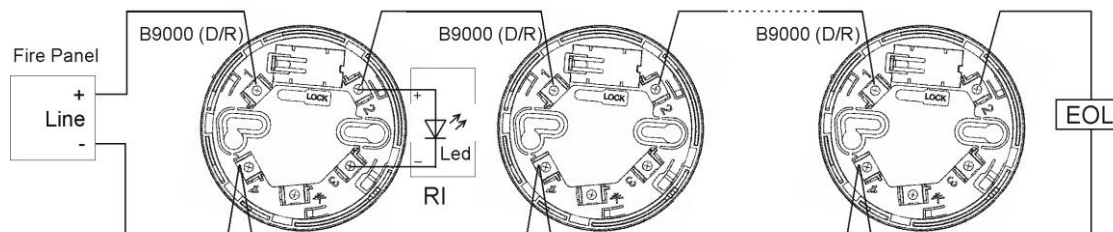
#### 4. MOUNTING

4.1. Remove the cover by pressing the click.

4.2. Fix the base on the wall or ceiling, using the appropriate fixings.

4.3. Feed the connection cable through the cable entry in the centre of the base and connect it to the terminals “+” and “-”.

4.4. Replace the cover on the base.



#### WARRANTY

The warrant period is 24 months from the date of purchase, providing that the requirements stated in the service schedule have been observed.